

# WELLINGTON GREEN, A MUPD/PUD, A REPLAT OF TRACT B

BEING A REPLAT OF TRACT B, WELLINGTON GREEN, A MUPD/PUD, ACCORDING TO THE PLAT THEREOF, AS RECORDED IN PLAT BOOK 87, PAGES 81 THROUGH 90 OF THE PUBLIC RECORDS OF PALM BEACH COUNTY, FLORIDA, LYING IN SECTION 13, TOWNSHIP 44 SOUTH, RANGE 41 EAST, VILLAGE OF WELLINGTON, PALM BEACH COUNTY, FLORIDA

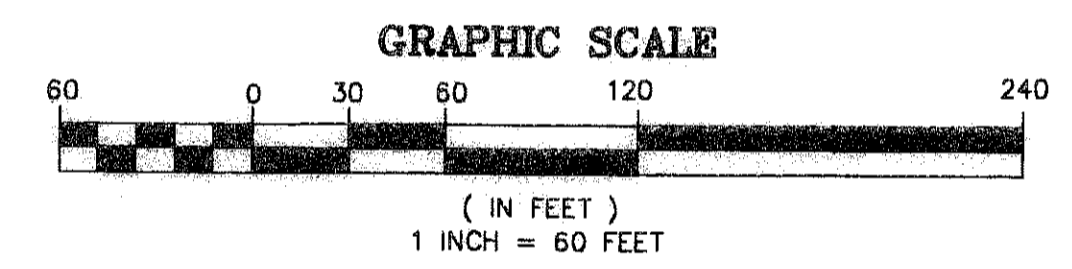
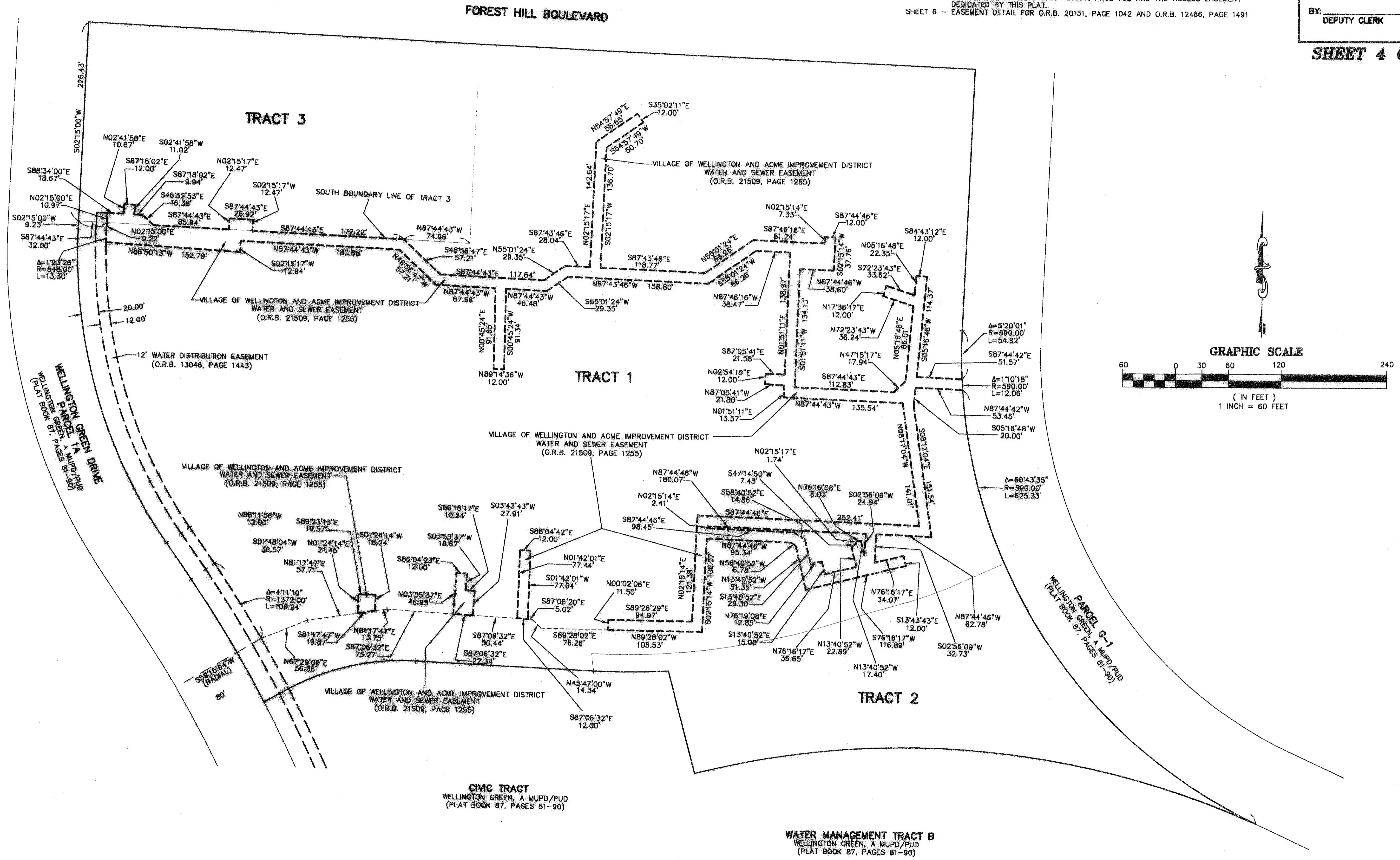
186

STATE OF FLORIDA  
 COUNTY OF PALM BEACH  
 THIS PLAT WAS FILED FOR  
 RECORD AT \_\_\_\_\_ M.  
 THIS \_\_\_\_\_ DAY OF  
 A.D. 2007 AND DULY RECORDED  
 IN PLAT BOOK \_\_\_\_\_ ON  
 PAGES \_\_\_\_\_ AND \_\_\_\_\_  
 SHARON R. BOCK  
 CLERK AND COMPTROLLER  
 BY: \_\_\_\_\_  
 DEPUTY CLERK

### SHEET INDEX

- SHEET 1 - COVER SHEET
- SHEET 2 - MAP SHEET
- SHEET 3 - EASEMENT DETAIL FOR O.R.B. 13563, PAGE 1 AND O.R.B. 12423, PAGE 1325
- SHEET 4 - EASEMENT DETAIL FOR O.R.B. 21509, PAGE 1255 AND O.R.B. 13046, PAGE 1443
- SHEET 5 - EASEMENT DETAIL FOR O.R.B. 18702, PAGE 874; O.R.B. 20151, PAGE 1046, 1049, 1052, 1055 AND 1058; O.R.B. 20007, PAGE 762 AND THE ACCESS EASEMENT DEDICATED BY THIS PLAT.
- SHEET 6 - EASEMENT DETAIL FOR O.R.B. 20151, PAGE 1042 AND O.R.B. 12466, PAGE 1491

SHEET 4 OF 6



THIS INSTRUMENT PREPARED BY  
 JEFFREY R. WAGNER  
 OF  
**CAULFIELD and WHEELER, INC.**  
 SURVEYORS - ENGINEERS - PLANNERS  
 7301-A WEST PALMETTO PARK ROAD, SUITE 100A  
 BOCA RATON, FLORIDA 33433 - (561)392-1991  
 JULY - 2007

EASEMENT DETAILS